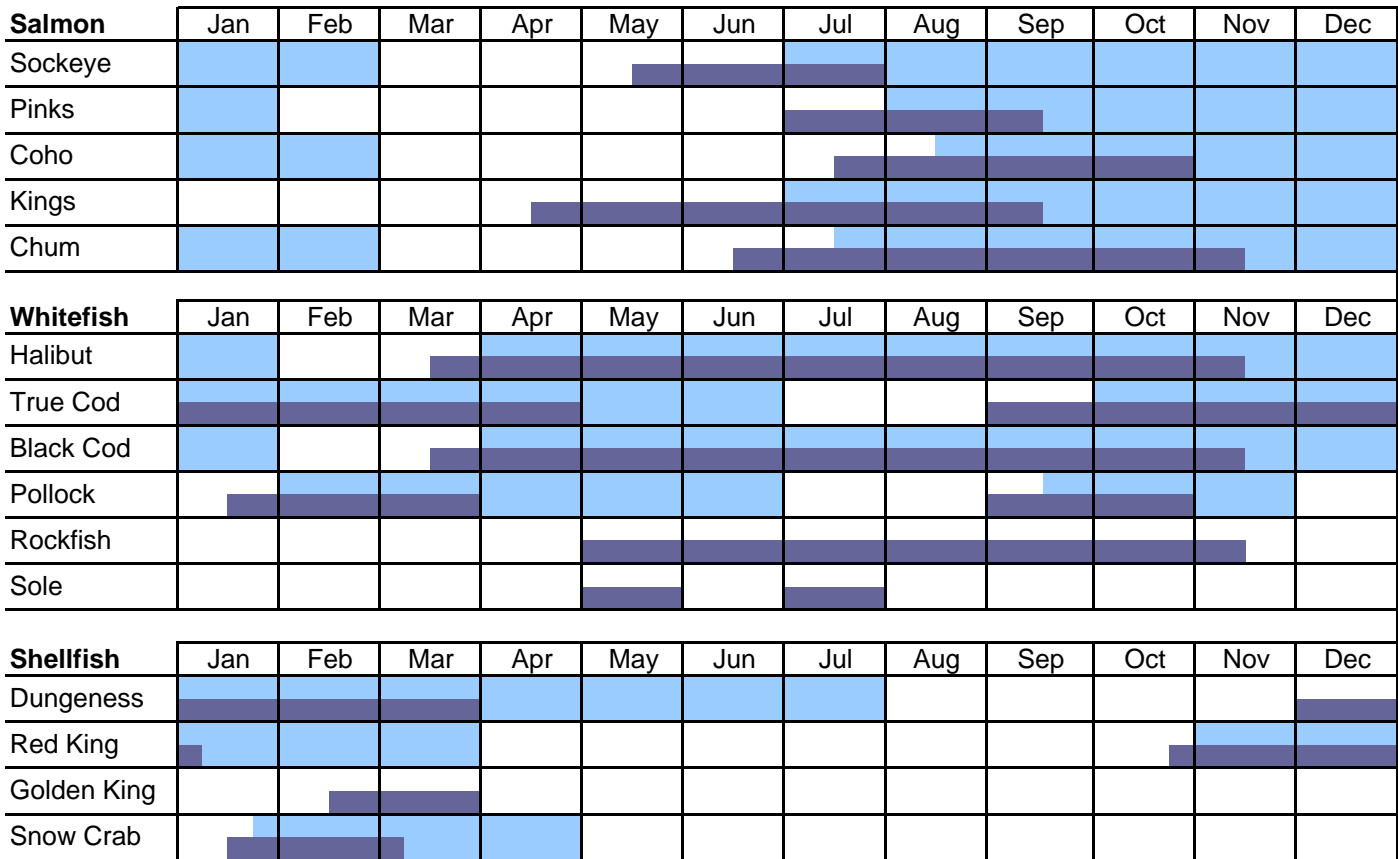


## Season Availability of Northport Fisheries Seafood

(This chart is meant to be used as a general guideline only. It is not exact to date)



**Fresh Product**

**Frozen Product**



**Product Forms Available - Fresh & Frozen**

<b>Salmon</b>	<b>Sockeye</b> H&G Fillets	<b>Pinks</b> H&G	<b>Coho</b> H&G Fillets	<b>Kings</b> H&G	<b>Chums</b> H&G Fillets	<b>PH: 425-743-0200</b> <b>FX: 425-335-3393</b>
<b>Whitefish</b>	<b>Halibut</b> H&G Fletches Cheeks Roast Ready	<b>True Cod</b> J-Cut Fillets PBO PBI	<b>Black Cod</b> J-Cut	<b>Pollock</b> Round Fillets	<b>Rockfish</b> Fillet Round	<b>Sole</b> Fillet Round
<b>Shellfish</b>	<b>Dungeness</b> Whl Cooked Sections	<b>Red King</b> Whl Cooked Sections	<b>Golden King</b> Whl Cooked Sections	<b>Snow Crab</b> Whl Cooked Sections		